

Beta Endo Motor

Endo Motor with Integrated Apex Locator

TOUCH THE MASTERY

Precision and Innovation
in Every Rotation



 Shenzhen Superline Technology Co., Ltd.

Add: Room 302, Nanshan Zhiyuan A4, No.1001 Xueyuan Avenue,
Changyuan community, Taoyuan Street, Nanshan District, Shen-
zhen, 518000 Guangdong, P.R. China



nicdental.com

NIC®

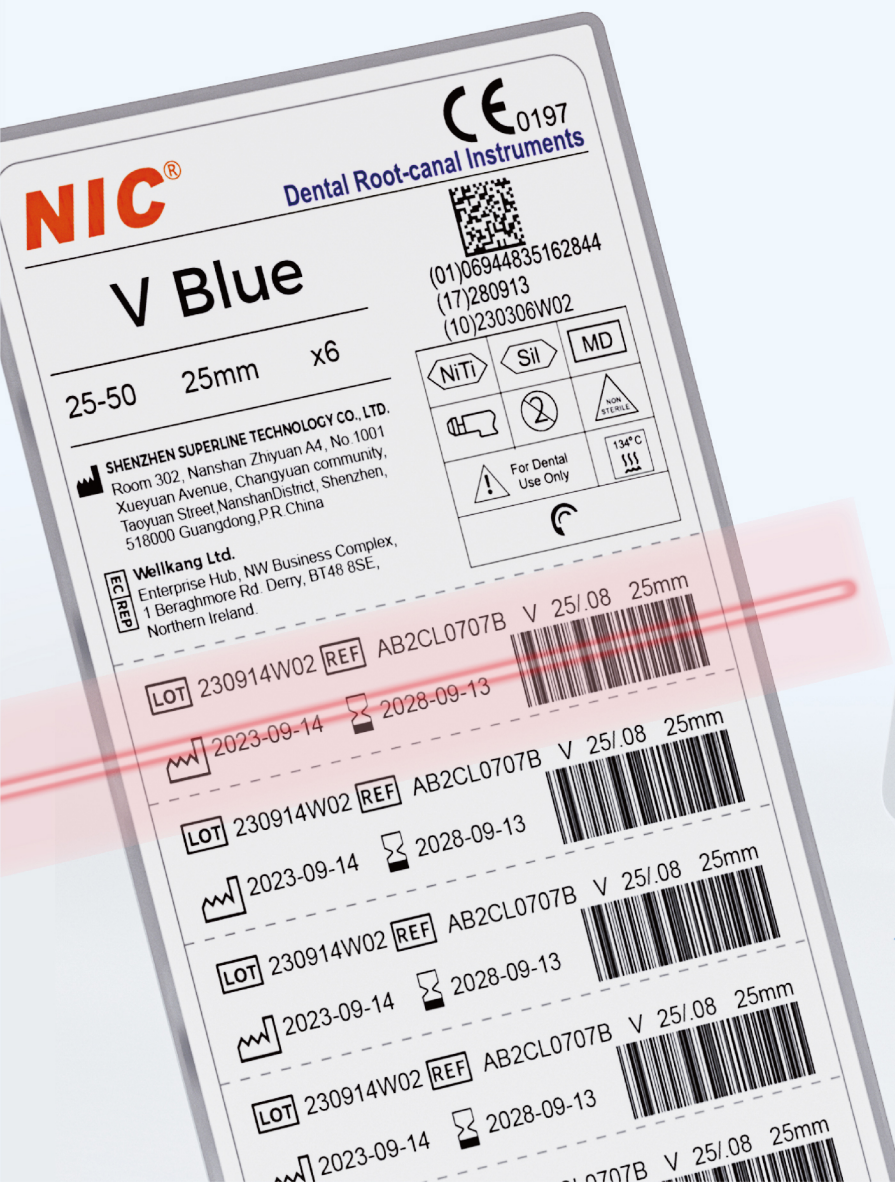
SHENZHEN SUPERLIEN TECHNOLOGY CO., LTD.

THE INTUITION MATRIX

Equipped with an integrated **barcode reader**, the Beta Endo Motor enables seamless instrument identification and management to streamline your workflow.

It minimizes manual errors, accelerates file setup, and ensures precise tracking for enhanced patient safety and instrument accountability.

With reliable motor control and smart digital integration, it delivers consistent, accurate results while boosting clinical efficiency.



The Beta Endo Motor combines apex locating and file preparation in one seamless system, allowing simultaneous or dedicated operation modes. Supporting up to 3-5 handpieces at once, it reduces procedural interruptions and simplifies workflow, helping you deliver efficient, precise treatments every time.



Independent Canal Preparation

Enables targeted shaping and cleaning of each canal individually, adapting to complex root anatomies for precise debridement.



Independent Apex Location

Delivers accurate apex measurement for each canal, allowing precise working length determination without interference from other canals.



Combined Apex Location and Preparation

Integrates apex detection with canal shaping in one seamless workflow, enhancing efficiency by enabling simultaneous measurement and instrumentation.

Safety Efficiency

- Smart interface + responsive memory
- Built-in file library with editable presets
- Quick access to frequently used modes



Clinical Advisor, Product Launch Preview

“ The Beta Endo Motor integrates power, precision, and intuitive usability in one system. It makes treatment smoother, safer, and more efficient—every time.

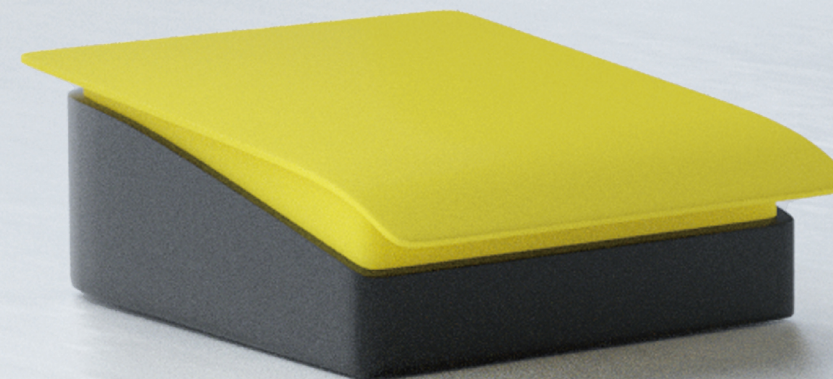


Powered by a Sensor-driven Brushless Motor

Our Brushless Motor delivers smooth, stable torque with lightning-fast response. This advanced technology ensures precise control and effortless navigation through complex canal anatomies, all while operating quietly and reliably for a comfortable treatment experience.



Powered by Wireless, Responsive Pedal Design



- Ergonomic Tilt
- Wireless Freedom Millisecond Response
- Long-lasting Battery





Personalized User Memory Profiles

Our endo motor features a user archive mode that allows clinicians to customize, store, and recall treatment parameters with ease.

Up to 30 individual file sequences and user-defined programs can be saved directly on the device—ideal for multi-operator practices or personalized protocols.



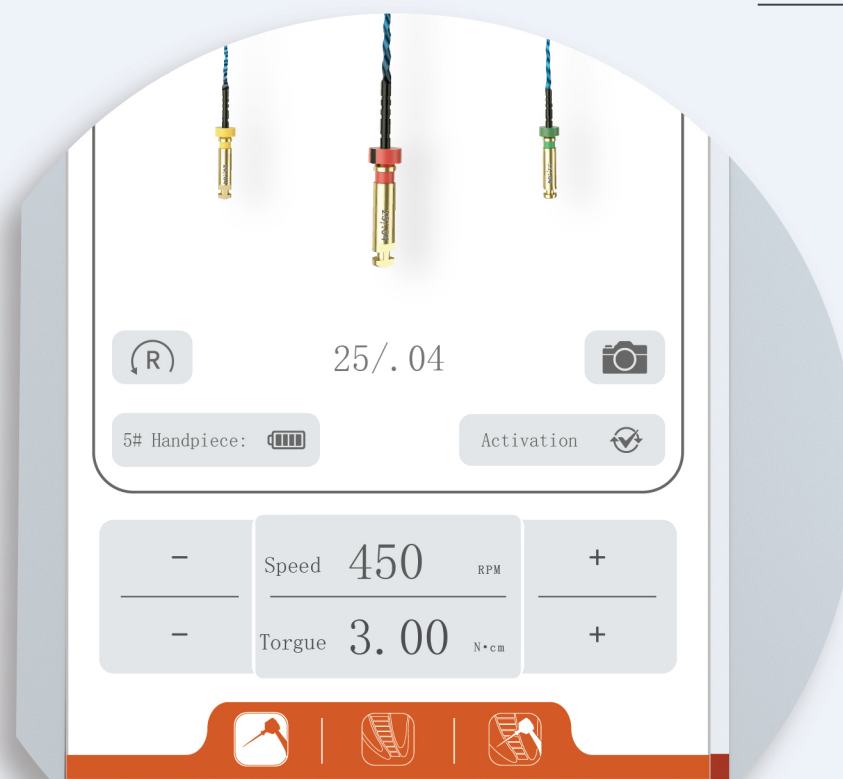
Dr. Patel
Endodontist

“The Beta Endo Motor enhances my workflow and lets me operate with confidence. It brings together intuitive control, reliable performance, and the precision I need.”

Perfect Match with NIC® File Systems

Beta Endo Motor seamlessly integrates with NIC® endodontic file systems.

Pre-loaded file libraries and auto-recognition instantly set the ideal torque and speed for each file, boosting efficiency and safety in every procedure.



Intelligent Terminal

The main unit supports simultaneous recognition and connection of multiple handpieces for multi-instrument workflows. Stable wireless transmission ensures low latency and rapid responsiveness.

Smart Barcode Recognition

Enables rapid and error-free data input, ushering in intelligent clinical management with ease and accuracy.



All-in-One Functionality

Integrates apex location with shaping, as well as independent modes for apex location or canal preparation. Enhances workflow efficiency, reduces equipment switching time, ensures smoother procedures, and improves patient comfort.

7-Inch IPS Ultra HD Touchscreen

Full-lamination technology delivers sharp, high-resolution display. Responsive and precise touch control offers intuitive operation.



Precision Parameter Adjustment

Torque Range: 0.5 ~ 4.0 N·cm, adjustable for safe and effective treatment. Speed Range: 100~1200+ rpm, offering stable, flexible speed control to suit different canal anatomies and treatment stages.

Extended Battery Performance

A single charge supports hours of uninterrupted use, meeting daily clinical demands without frequent recharging. Rigorously tested high-performance battery ensures long-lasting reliability and stable output.



Power adapter	Input		~100V~240V 50/60Hz
	Output		5V, 2A
Lithium battery	Controller	Voltage	7.2V
		Capacity	5000 mAh
		Model	YOS ICP 18650-2S2P
	Handpiece	Voltage	3.6V
		Capacity	1200 mAh
		Model	YOS 3.6V 1.2AH-14500
Footswitches	Voltage	3.6V	
	Capacity	1200 mAh	
	Model	YOS 3.6V 1.2AH-14500	
	Speed	100-1200 rpm	
	Torque	0.5 N·cm-4.0 N·cm	
Contra-angle	Minimum fitting length of shank		8.4mm
	Type and size of file shank		Type 1, 2.35mm in diameter, flat
	Gear ratio		9:1
	Software release version		Beta Endo V1.0